

2. Report of Visiting at Bordeaux university hospital & Istituto Orthopedico Galeazzi, Milan

K. Kumano, M.D. JPSTSS board member

T. Umebayashi, M.D. ShinYokohama Spine Clinic

Y. Kumano, M.D. Tama Hokubu medical center

Travel schedule

2013.1.27 Flight from Haneda to Paris to Bordeaux

2013.1.28 Bordeaux university hospital

Case 1. Congenital scoliosis 15 y.o. boy Op. time: 3hrs.

Case 2. Post traumatic kyphoscoliosis 52 y.o. man No neurological symptom Op: 4 hrs.

2013.1.29 Bordeaux university hospital

Case 3. ACF at two level for cervical canal stenosis Op: 60 min.

Flight from Bordeaux to Paris to Milan

2013.1.30 Istituto Orthopedico Galeazzi Dr. Pedro Berjano

Case 1. SCS at L4/5 with spondylolisthesis XLIF with unilateral PS Posterior decompression
Op time: 70 min.

Case 2. Lumbar discopathy with tilting spine XLIF with unilateral PS Posterior decompression
Op time: 75 min.

Flight from Milan to Paris

Visiting at Bordeaux university hospital, Bordeaux, France

Surgeon Dr. Ibrahim Obeid

Case1. Pedicle screwing for congenital scoliosis

Case2. PSO pedicle screwing

Case3. ACF for cervical canal stenosis

Bordeaux university hospital

Surgeon : Dr.Ibrahim Obeid

Case 2.

Pedicle Subtraction Osteotomy (PSO) for traumatic kyphoscoliosis at T4 due to compression fracture

Man , age 52

Points of this procedure by Dr. I. Obeid

- Free hand pedicle screwing at mid thoracic spine. T5, T6, T7 distal to PSO
- Pedicle screwing at upper thoracic spine, T1, T2, T3 proximal to PSO using O-arm
- Excision of costovertebral joint at T3/4 and T4/5
- PSO
- Two rods and domino connector construction
- Cantilever action correction
- Intraoperative neuromonitoring



Positioning on Jackson table

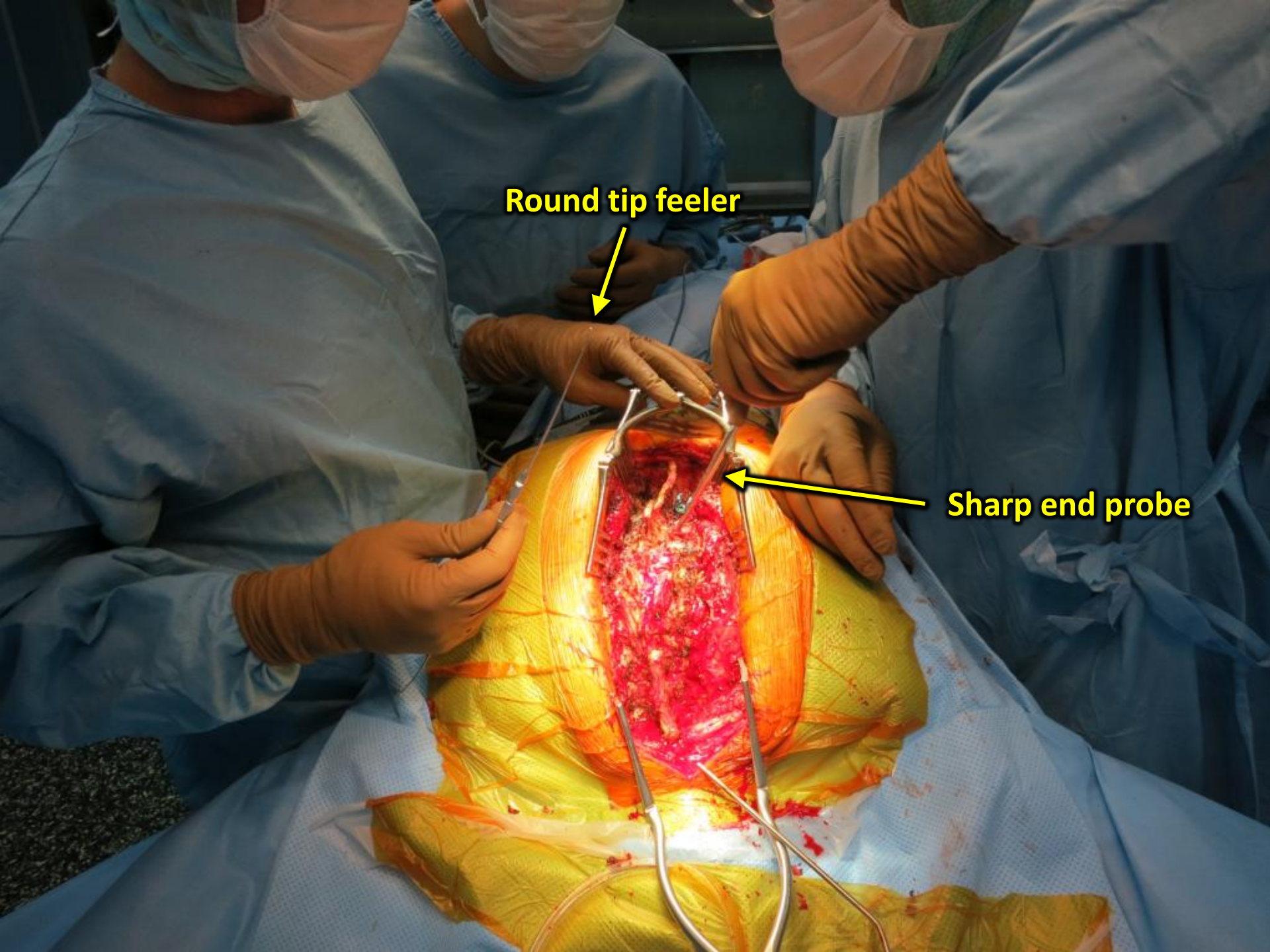
Free hand pedicle screwing with sharp end and round tip feeler



Round tip feeler



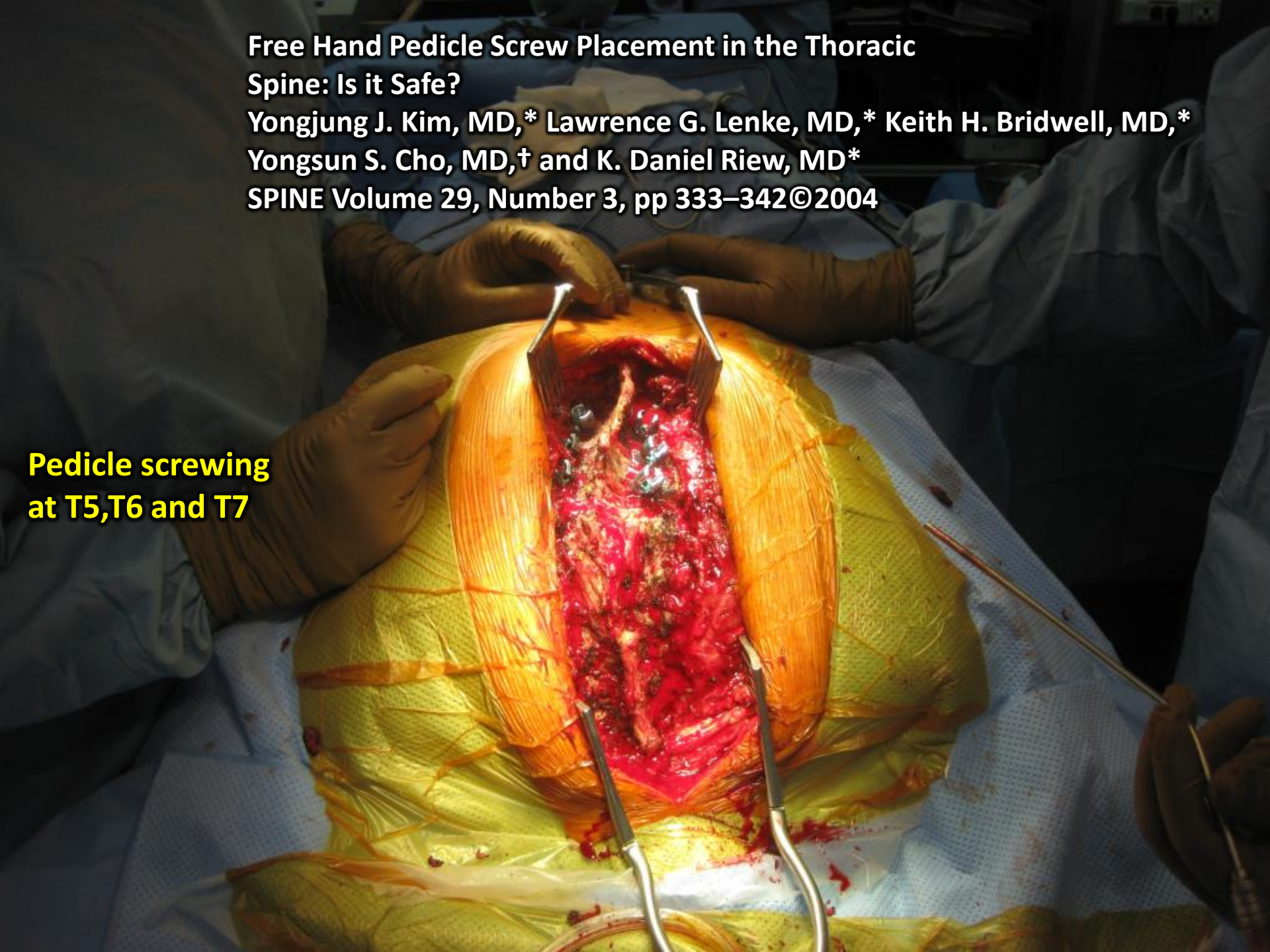
Sharp end probe



Free Hand Pedicle Screw Placement in the Thoracic Spine: Is it Safe?

**Yongjung J. Kim, MD,* Lawrence G. Lenke, MD,* Keith H. Bridwell, MD,*
Yongsun S. Cho, MD,† and K. Daniel Riew, MD*
SPINE Volume 29, Number 3, pp 333–342©2004**

**Pedicle screwing
at T5,T6 and T7**



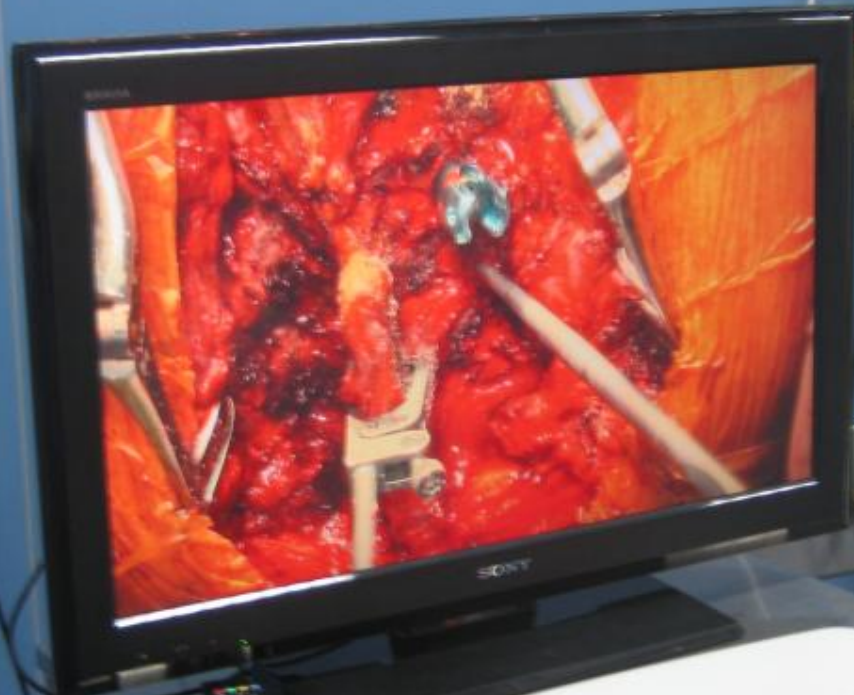


O-arm pedicle screwing



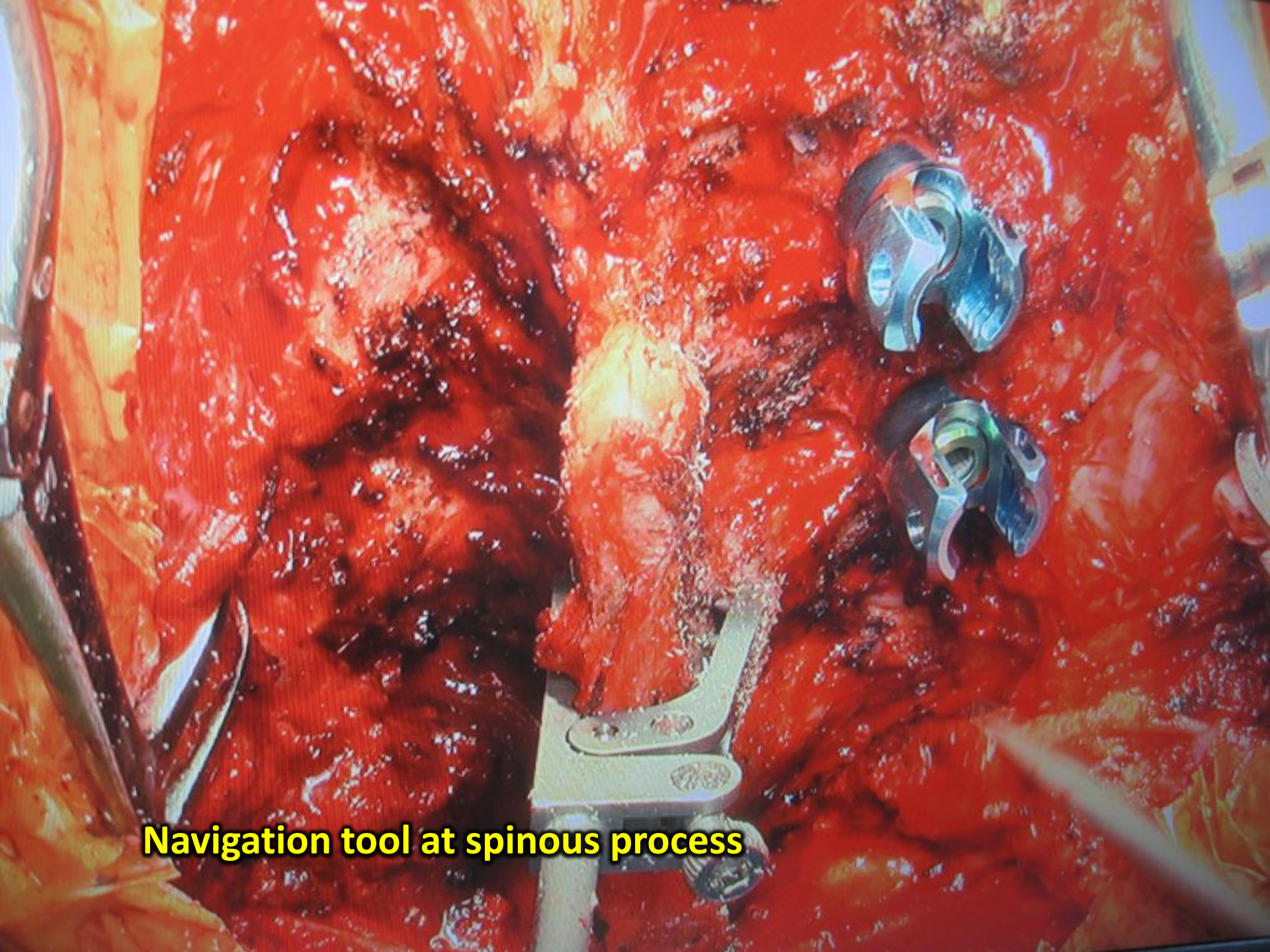
Navigation tool at spinous process

Pedicle screwing by Navigation



Pedicle screwing by Navigation





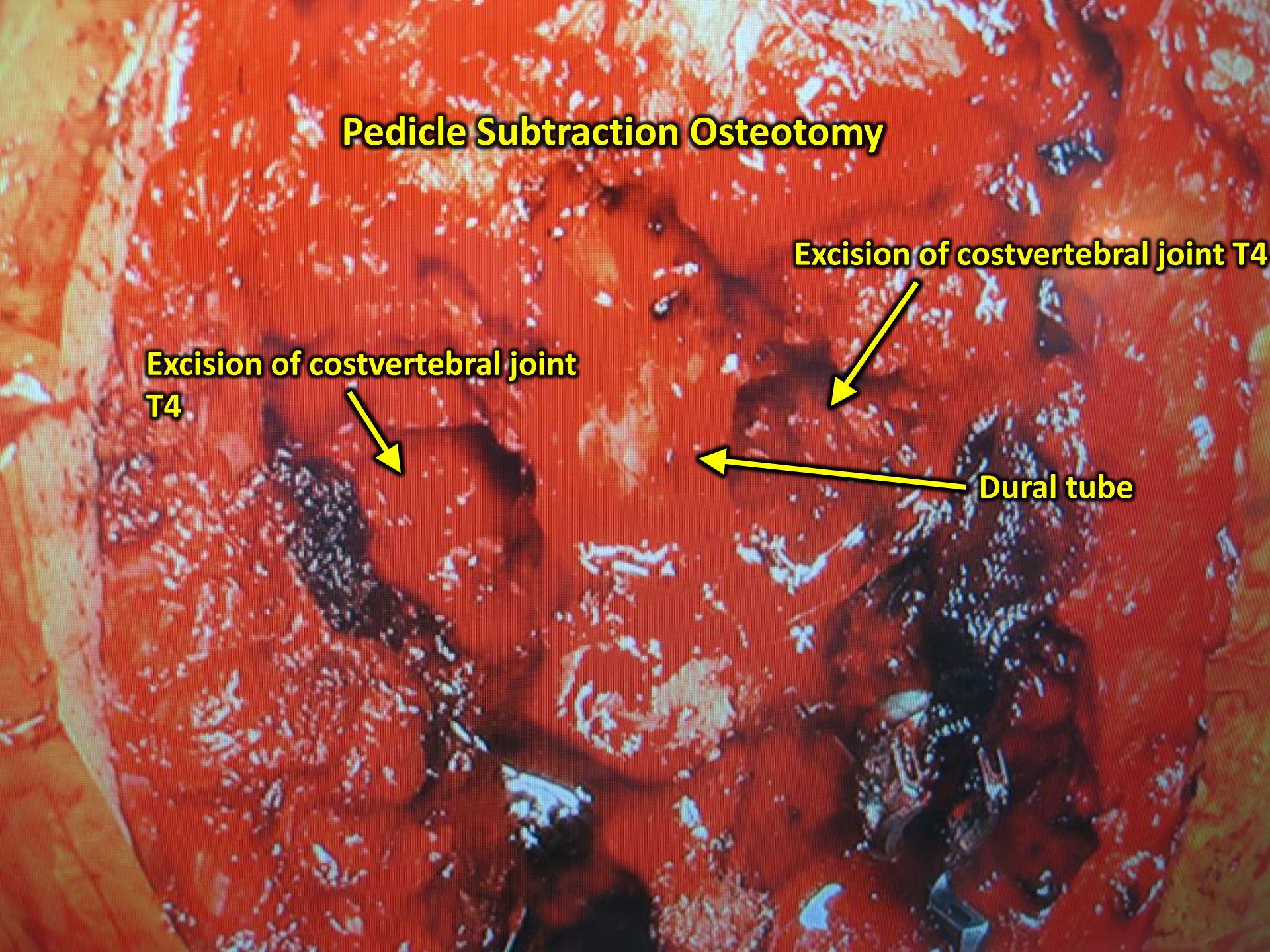
Navigation tool at spinous process

Pedicle Subtraction Osteotomy

Excision of costvertebral joint
T4

Excision of costvertebral joint T4

Dural tube





Distal pedicle screws

Cantilever action correction

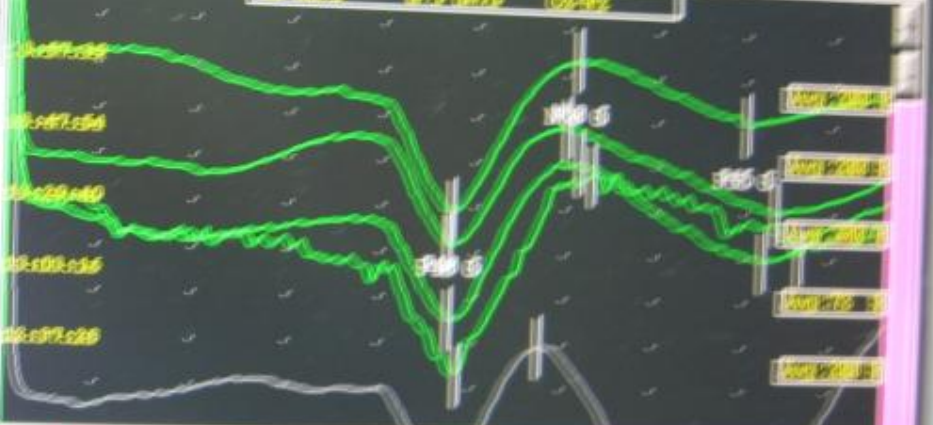
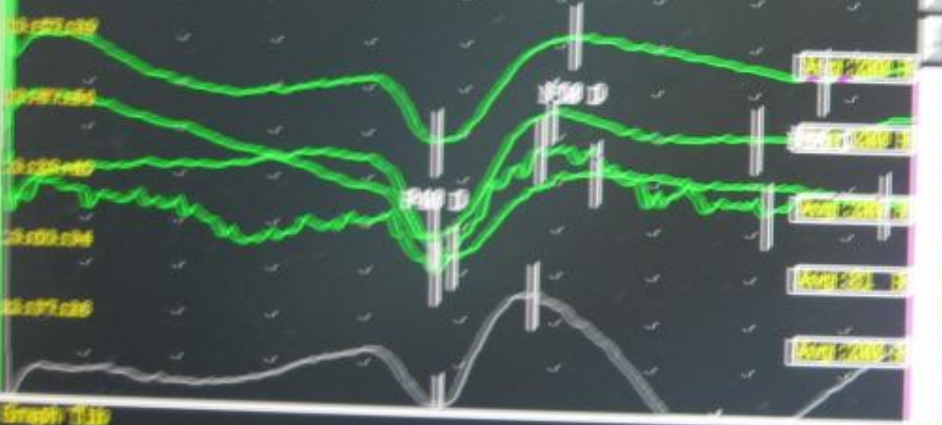
PES Tibiaux
14:02:06

Tibial Dt
Tibial Gch

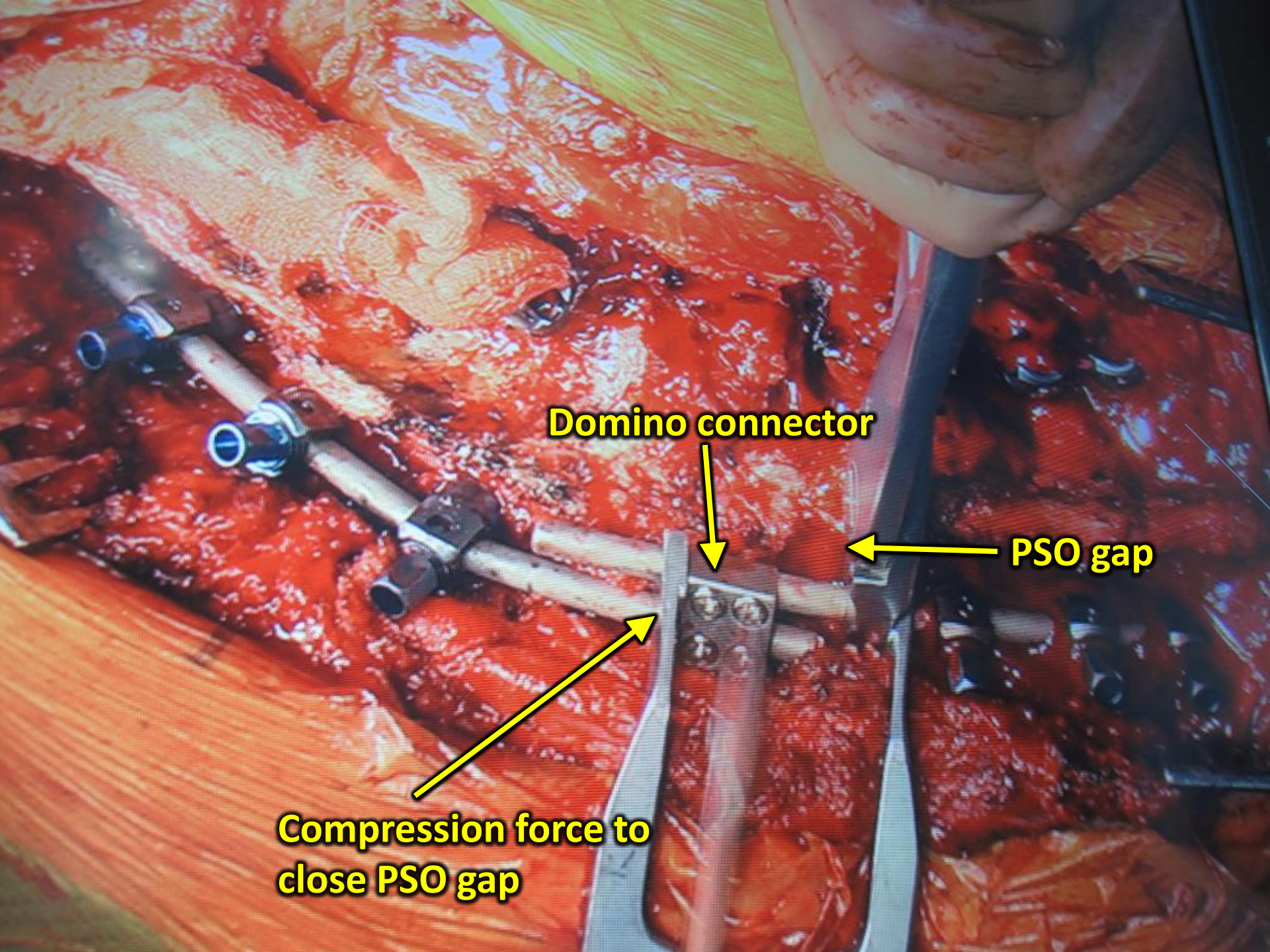
21.7mA
21 Smk

Intraoperative neuromonitoring

0987 (455)
nick
2022 20-01-19



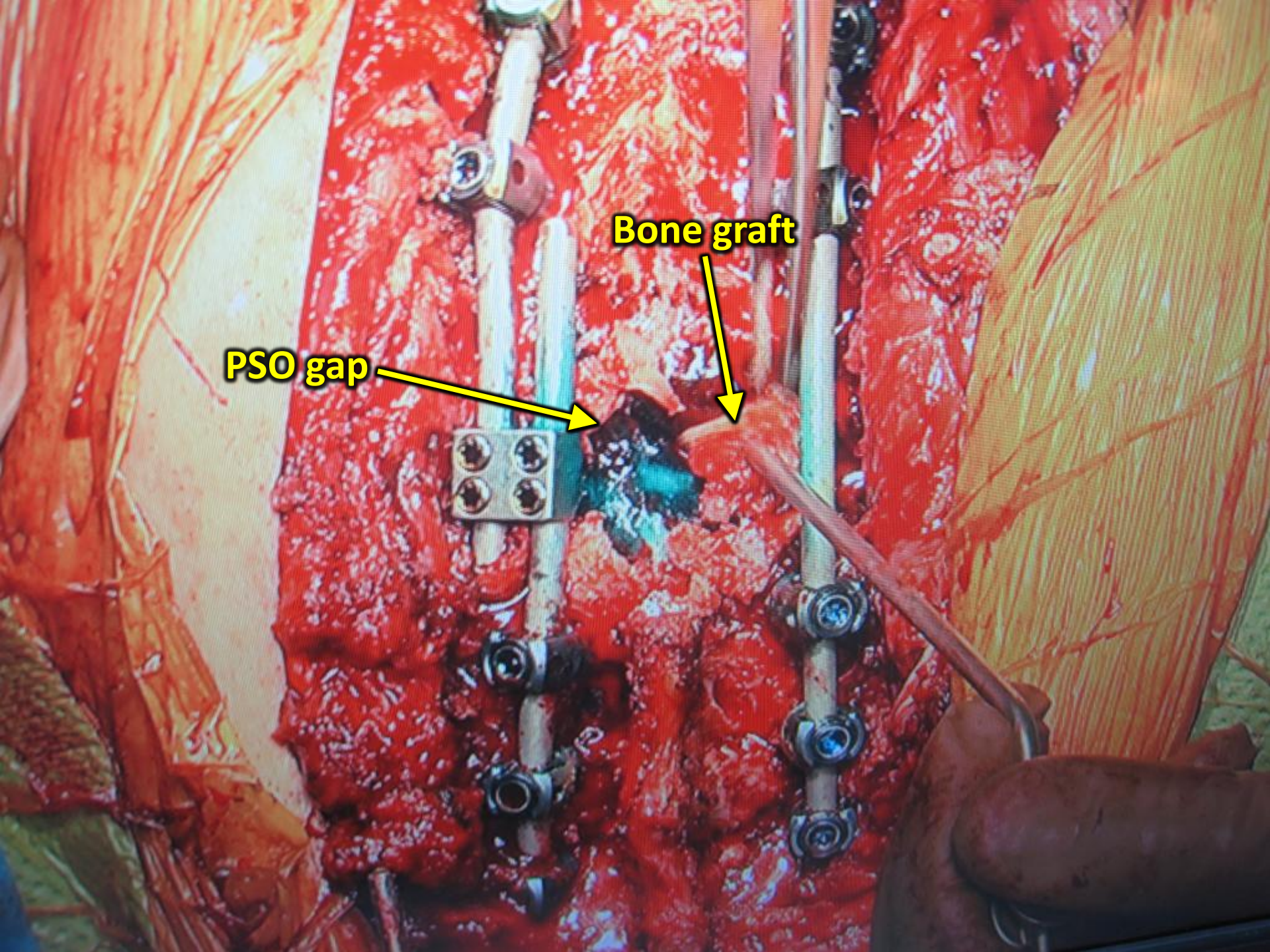
dev. 108 site 3
dev. 108 site 3



Domino connector

PSO gap

**Compression force to
close PSO gap**



Bone graft

PSO gap



Pre & Post op X-rays on standing



Dr. Ibrahim Obeid

Prof. Jean-Mark Vital



RADIOLOGIE
→

Consulta →

Infi

28 Jan. 2013